

SOUTH AUSTRALIAN ECONOMIC INDICATORS

EMBARGO: 11:30AM (CANBERRA TIME) MON 3 NOV 2003

C O N T E N T S

	<i>page</i>
Notes.....	2
REVIEW	
Overview	3
Selected features	4
TABLES	
List of tables	5
Statistical summary	6
State summary	8
State accounts	9
International trade	10
Consumption and investment	13
Production	15
Consumer price index	19
Labour force and demography	20
Average weekly earnings	23
Financial markets	24
ADDITIONAL INFORMATION	
Sources for summary tables	25

I N Q U I R I E S

- For further information about these and related statistics, contact Felicité McCracken on Adelaide (08) 8237 7604 or the National Information and Referral Service on 1300 135 070.

NOTES

FORTHCOMING ISSUES

<i>ISSUE</i>	<i>RELEASE DATE</i>
December 2003	1 December 2003
January 2004	19 December 2003
February 2004	2 February 2004
March 2004	1 March 2004
April 2004	1 April 2004
May 2004	3 May 2004

ABOUT THIS PUBLICATION

South Australian Economic Indicators is a monthly publication which contains the latest available data at the time of preparation for a range of statistical series that have been identified as indicators of economic activity in this State. In a number of cases the figures presented are preliminary and subject to revision in subsequent issues.

SYMBOLS AND OTHER USAGES

\$b	billion dollars (one thousand million)
\$m	million dollars
n.a.	not available
n.y.a.	not yet available
qtr	quarter
*	subject to sampling variability too high for most practical purposes
..	not applicable
0, 0.0	nil, or rounded to zero

ROUNDING

Where figures have been rounded, discrepancies may occur between sums of the component items and totals.

INFORMATION

More detailed information on each series, including explanatory and technical notes, can be obtained from other Australian Bureau of Statistics publications or alternative data sources. To assist those seeking further information, publication source numbers are shown in tables 1 and 2, as a reference to the source of summary tables section on page 25.

Ian Crettenden
Regional Director
South Australia

OVERVIEW

The data in this Overview are presented in trend terms, unless otherwise stated.

INTERNATIONAL TRADE

The value of South Australian merchandise exports (in original terms) for the month of August 2003 was \$630.2m. This was an increase of 7.4% over July 2003 but was 24.2% less than the value of exports in August 2002 (\$831.2m).

The value of South Australian merchandise imports (in original terms) for August 2003 was \$427.7m. This was a decrease of 4.0% from \$445.7m recorded in July 2003 and 10.2% less than the August 2002 figure of \$476.1m.

CONSUMPTION AND INVESTMENT

In the twelve months to August 2003 retail turnover increased by 3.2% to \$1,107.7m. This was a decrease of 0.3% from the July 2003 figure of \$1,110.8m.

New motor vehicle sales rose 1.8% in September to 5,409. This was an increase of 22.5% over the year since September 2002.

Private new capital expenditure in the June quarter was \$1,088m, an increase of 25.9% on the June quarter 2002, and 8.4% over the March 2003 quarter. Expenditure for the financial year 2002–03 was \$44,015m, an increase of 29.0% over the previous financial year.

HOUSING

In August 2003 the estimated number of dwelling units approved in South Australia was 919, having risen for the last five months. The trend for private sector houses has risen for the last six months.

CONSUMER PRICE INDEX

The all groups consumer price index in Adelaide for the September quarter 2003 was 145.4, an increase of 3.6% on the level recorded for the September 2002 quarter and up 0.8% on the June quarter 2003.

LABOUR FORCE AND DEMOGRAPHY

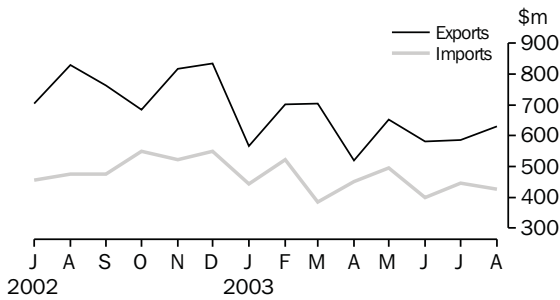
The estimate of employed persons in South Australia was 716,900 persons in September 2003, 3.3% higher than the level of twelve months ago (694,100). The total number of persons employed full-time in South Australia was 501,500 in September 2003, 5.1% higher than the September 2002 estimate. In September 2003, the unemployment rate for South Australia was 6.0%, compared with 6.4% in September 2002 and the participation rate was 61.9%, 1.2 percentage points higher than the rate in September 2002.

FINANCIAL MARKETS

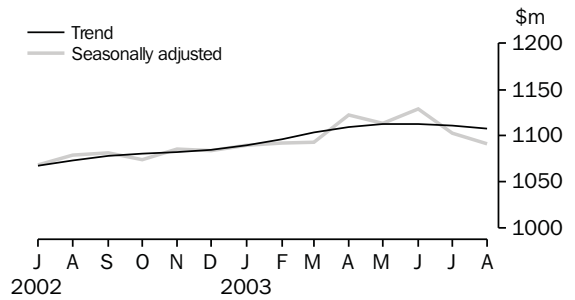
The value of secured housing finance commitments (excluding alterations and additions) was \$663.4m in August 2003. This was an increase of 1.3% over the previous month and 31.7% over the value of commitments in August 2002 (\$503.9m).

SELECTED FEATURES

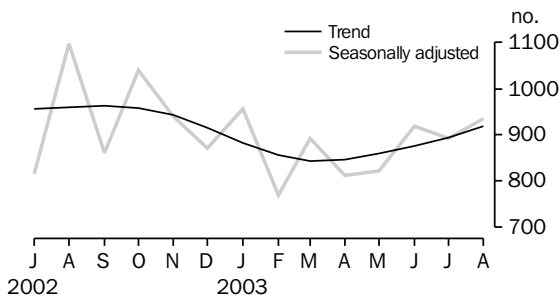
MERCHANDISE EXPORTS AND IMPORTS



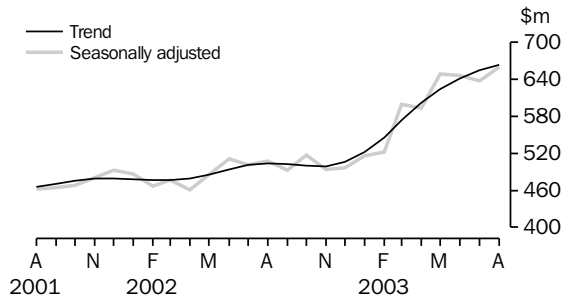
RETAIL TURNOVER



DWELLING UNITS APPROVED

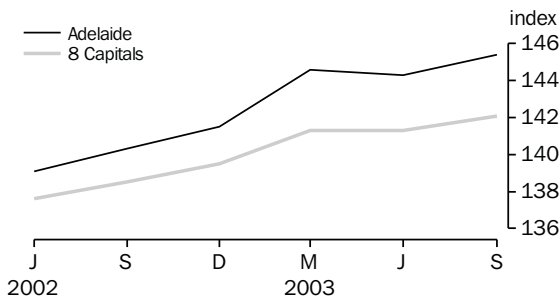


SECURED HOUSING FINANCE COMMITMENTS(a)

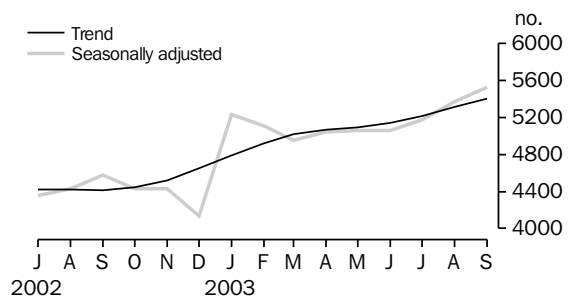


(a) Excludes alterations and additions. Includes refinancing.

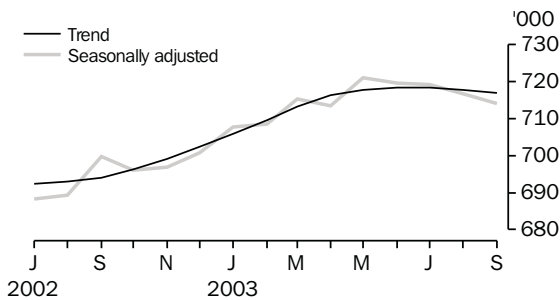
CONSUMER PRICE INDEX



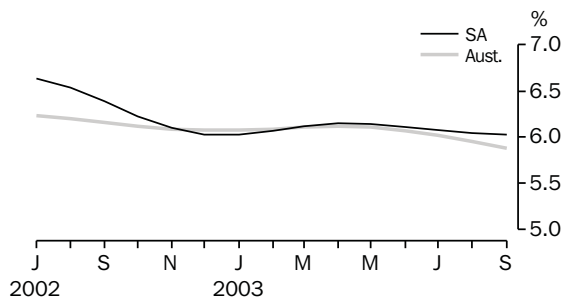
NEW MOTOR VEHICLE SALES



EMPLOYED PERSONS



UNEMPLOYMENT RATES—TREND



LIST OF TABLES

			Page
STATISTICAL SUMMARY	1	Statistical summary	6
	2	State summary	8
STATE ACCOUNTS	3	State accounts at current prices	9
	4	State accounts at chain volume measures	9
INTERNATIONAL TRADE	5	Merchandise exports, by selected commodity group	10
	6	Merchandise exports, by selected countries and country groups	11
	7	Merchandise imports, by selected commodity group	12
CONSUMPTION AND INVESTMENT	8	Turnover of retail establishments, by industry—trend	13
	9	New motor vehicle sales, by type of vehicle	13
	10	Actual private new capital expenditure, by selected industry and type of asset	14
	11	Tourist accommodation	14
PRODUCTION	12	Building approvals	15
	13	Building commencements	16
	14	Value of building work done and completed during period	17
	15	Production, livestock products and selected commodities	18
	16	Consumer price index, by group—Adelaide	19
LABOUR FORCE AND DEMOGRAPHY	17	Estimated resident population and components of population change	20
	18	Births, deaths, marriages and divorces	20
	19	Civilian labour force status	21
	20	Civilian labour force, unemployment and participation rates	22
AVERAGE WEEKLY EARNINGS	21	Average weekly earnings of employees	23
FINANCIAL MARKETS	22	Secured housing finance commitments	24
	23	Finance commitments	24

Indicator	Period	South Australia			Australia			SA as a % of Aust.	Source index
		Number	% change from		Number	% change from			
			Previous period	Same period previous year		Previous period	Same period previous year		
State accounts									
Domestic final demand									
Current prices trend (\$m)	Jun qtr 03	14 299	2.5	9.5	197 018	1.5	7.3	7.3	(1)
Chain volume measures trend (\$m)	Jun qtr 03	13 812	1.8	6.5	191 307	1.0	5.0	7.2	(1)
Private final consumption expenditure									
Current prices trend (\$m)	Jun qtr 03	8 607	1.8	7.8	115 862	1.3	5.9	7.4	(1)
Chain volume measures trend (\$m)	Jun qtr 03	8 240	1.2	4.2	112 260	1.0	3.5	7.3	(1)
Private gross fixed capital formation									
Current prices trend (\$m)	Jun qtr 03	2 675	4.2	19.8	39 044	1.7	12.6	6.9	(1)
Chain volume measures trend (\$m)	Jun qtr 03	2 654	4.5	19.4	38 262	1.2	10.6	6.9	(1)
Compensation of employees									
Current prices trend (\$m)	Jun qtr 03	5 923	1.6	6.2	92 079	1.5	6.5	6.4	(1)
International accounts									
Exports (\$m)	Aug 03	630.2	7.4	-24.2	9 146.2	6.9	-11.0	6.9	(2)
Imports (\$m)	Aug 03	427.7	-4.0	-10.2	10 878.2	2.5	-4.5	3.9	(2)
Consumption and investment									
Retail turnover									
Current prices original (\$m)	Aug 03	1 063.6	-1.8	-0.4	14 815.5	-0.2	4.7	7.2	(3)
Current prices trend (\$m)	Aug 03	1 107.7	-0.3	3.2	15 221.4	0.7	6.3	7.3	(3)
Chain volume measures original (\$m)	Jun qtr 03	3 140.2	4.1	4.5	41 936.8	3.3	3.7	7.5	(3)
New motor vehicle sales									
Original (no.)	Sep 03	5 222	-0.8	24.7	76 173	-2.1	15.4	6.9	(4)
Trend (no.)	Sep 03	5 409	1.8	22.5	80 416	1.0	15.6	6.7	(4)
Private new capital expenditure									
Current prices original (\$m)	Jun qtr 03	1 138	26.9	26.9	13 423	15.2	11.2	8.5	(5)
Current prices trend (\$m)	Jun qtr 03	1 088	8.4	25.9	12 836	0.8	11.1	8.5	(5)
Private new capital expenditure (\$m)	2002-03	4 015	29.0	..	51 098	15.1	..	7.9	(5)
Tourist accommodation takings (\$m)	Mar qtr 03	59.1	-8.9	1.5	1 244.7	-5.3	2.5	4.8	(6)
Production									
Dwelling unit approvals									
Original (no.)	Aug 03	872	-13.1	-18.7	14 592	-9.1	-19.3	6.0	(7)
Trend (no.)	Aug 03	919	2.7	-4.3	14 836	1.4	-4.2	6.2	(7)
Dwelling units commenced (no.)	June qtr 03	2 450	3.6	-7.3	38 658	1.3	-11.4	6.3	(8)
Value of non-residential building approvals—trend (\$m)									
	Aug 03	91.3	-3.3	17.1	1 487.6	3.2	12.1	6.1	(7)
Value of total building activity									
Commenced (\$m)	June qtr 03	654.2	15.5	14.1	11 787.8	1.8	3.5	5.5	(8)
Work done (\$m)	June qtr 03	659.8	14.2	18.1	12 031.1	7.9	10.4	5.5	(8)
Work yet to be done (\$m)	June qtr 03	1 032.6	3.5	31.7	20 908.8	1.8	22.4	4.9	(8)
Value of engineering construction work done (\$m)									
	June qtr 03	499.1	10.5	29.5	6 871.5	16.4	21.2	7.3	(9)
Manufacturing production									
Red meat trend (tonnes)	Jun qtr 03	58 844	-3.6	-4.3	741 807	-3.1	-4.8	7.9	(11)
Mineral exploration expenditure (other than for petroleum) (\$m)									
	Jun qtr 03	11.0	83.3	11.1	203.4	32.6	20.9	5.4	(12)

Indicator	Period	South Australia			Australia			SA as a % of Aust.	Source index
		Number	% change from		Number	% change from			
			Previous period	Same period previous year		Previous period	Same period previous year		
Prices(a)									
CPI—All groups (index no.)	Sep qtr 03	145.4	0.8	3.6	142.1	0.6	2.6	..	(13)
Price index of materials used in house building (index no.)	Sep qtr 03	137.4	0.4	2.2	132.9	0.6	3.2	..	(14)
Price index of materials used in building other than houses (index no.)	Sep qtr 03	125.6	0.4	3.1	126.3	0.5	3.9	..	(14)
Price index of established houses (index no.)	Jun qtr 03	199.1	7.6	24.7	223.8	5.0	18.1	..	(15)
Price index of project homes (index no.)	Jun qtr 03	157.9	0.8	4.4	147.9	2.2	5.7	..	(15)
Labour force and demography									
Population (resident at end qtr) ('000)	Mar qtr 03	1 528.2	0.3	0.6	19 875.0	0.5	1.3	7.7	(16)
Natural increase of the population ('000)	Mar qtr 03	1.7	-62.0	-1.9	28.1	-8.1	-10.6	6.1	(16)
Labour force									
Original ('000)	Sep 03	766.2	1.1	1.8	10 236.8	2.0	1.6	7.5	(17)
Trend ('000)	Sep 03	762.9	-0.2	2.9	10 113.8	0.0	1.4	7.5	(17)
Employed persons									
Original ('000)	Sep 03	719.1	0.8	2.1	9 646.1	1.8	2.1	7.5	(17)
Trend ('000)	Sep 03	716.9	-0.1	3.3	9 519.1	0.1	1.7	7.5	(17)
Participation rate									
Original(b) (%)	Sep 03	62.1	0.6	0.6	64.2	1.2	0.0	..	(17)
Trend(b) (%)	Sep 03	61.9	-0.1	1.3	63.4	-0.1	-0.2	..	(17)
Unemployment rate									
Original(b) (%)	Sep 03	6.1	0.3	-0.3	5.8	0.2	-0.4	..	(17)
Trend(b) (%)	Sep 03	6.0	0.0	-0.4	5.9	-0.1	-0.3	..	(17)
Job vacancies ('000)	Aug 03	6.4	10.2	-17.8	108.8	9.4	-0.7	5.9	(18)
Industrial disputes ('000 working days lost)	Jul 03	3.4	385.7	100.0	47.2	130.2	115.5	7.2	(19)
Income									
Average weekly earnings (full-time adults; ordinary time)									
Original (\$)	May qtr 03	859.7	1.0	7.5	921.0	2.3	6.3	..	(20)
Trend (\$)	May qtr 03	864.6	2.6	7.9	918.8	1.7	5.7	..	(20)
Wage cost index (total hourly rate excluding bonuses)(c) (index no.)	Jun qtr 03	119.7	0.5	3.9	120.1	0.6	3.6	..	(21)
Financial markets									
Secured housing finance(d)									
Original (\$m)	Aug03	604.5	-8.5	27.0	10 602.3	-6.3	25.6	5.7	(22)
Trend (\$m)	Aug03	663.4	1.3	31.7	10 820.2	2.7	28.3	6.1	(22)
Finance commitments									
Personal (\$m)	Aug03	462.5	1.1	23.1	6 784.4	-3.5	20.8	6.8	(23)
Commercial (\$m)	Aug03	928.2	-15.9	-8.0	23 403.1	-7.2	-4.9	4.0	(23)
Lease (\$m)	Aug03	13.1	-21.4	5.8	541.8	-15.8	2.4	2.4	(23)
Interest rates(b)									
Banks new housing loans (%)	Aug 03	6.55	0.0	0.0	..	(24)
Bank loans—small, medium business(e) (%)	Aug 03	8.35	0.0	0.0	..	(24)
Bank loans—large business (%)	Aug 03	8.35	0.0	0.0	..	(24)

(a) Base year of each index 1989-90 = 100.

(b) Change is shown in terms of percentage points.

(c) Base year of index Sep 1997 = 100.

(d) Excludes alterations and additions. Includes refinancing.

(e) Rate for business loans over \$50,000.

2

STATE SUMMARY

<i>Indicator</i>	<i>Period</i>	<i>NSW</i>	<i>Vic.</i>	<i>Qld</i>	SA	<i>WA</i>	<i>Tas.</i>	<i>NT</i>	<i>ACT</i>	<i>Source index</i>
SELECTED INDICATORS										
CPI—All groups(a) (index no.)	Sep qtr 03	142.4	141.8	143.3	145.4	138.6	141.1	137.8	141.9	(13)
Participation rate trend (%)	Sep 03	62.5	63.1	64.6	61.9	65.8	58.7	69.0	71.1	(17)
Unemployment rate trend (%)	Sep 03	5.7	5.5	6.5	6.0	6.1	6.7	5.7	4.3	(17)
Average weekly earnings (full-time adults; ordinary time) trend (\$)	May qtr 03	967.70	920.30	836.40	864.60	910.00	831.60	895.70	1 056.40	(20)
SELECTED INDICATORS PER HEAD OF POPULATION(b)										
State final demand										
Chain volume measures trend(c) (\$'000)	Jun qtr 03	9.8	9.6	9.1	9.0	9.7	8.0	13.2	16.6	(1)
Retail turnover										
Current prices original (\$)	Aug 03	764.1	702.9	782.1	696.0	735.3	644.6	860.3	959.9	(3)
Current prices, trend	Aug 03	783.1	728.9	792.1	724.8	761.9	679.1	785.8	984.3	(3)
New motor vehicle sales trend (no. per '000 population)	Sep 03	4.0	4.3	4.3	3.5	3.8	3.3	3.2	4.0	(4)
Private new capital expenditure										
Current prices trend (\$)	Jun qtr 03	534.1	641.0	606.7	712.0	988.0	434.7	2 404.7	525.0	(5)
Dwelling unit approvals										
Original (no. per '000 population)	Aug 03	0.606	0.745	0.981	0.571	0.954	0.519	0.294	0.389	(7)
Trend (no. per '000 population)	Aug 03	0.593	0.788	0.973	0.601	0.946	0.552	0.315	0.479	(7)
Secured housing finance(d) (\$)	Aug 03	621.6	481.8	552.8	395.6	531.8	283.5	268.9	466.0	(22)
PERCENTAGE CHANGE FROM PREVIOUS PERIOD										
State final demand										
Chain volume measures trend (%)	Jun qtr 03	1.0	0.5	1.2	1.8	1.6	0.5	2.2	1.1	(1)
Retail turnover										
Current prices original (%)	Aug 03	1.0	-1.5	0.2	-1.8	-0.6	-0.9	0.3	0.0	(3)
Current prices, trend	Aug 03	0.5	0.5	1.4	-0.3	1.0	1.3	0.8	0.1	(3)
New motor vehicle sales trend (%)	Sep 03	0.9	0.4	1.7	1.8	1.2	2.0	-1.4	0.7	(4)
Private new capital expenditure										
Current prices trend (%)	Jun qtr 03	0.0	-1.5	0.9	8.4	5.6	-2.4	1.5	3.7	(5)
Dwelling unit approvals										
Original (%)	Aug 03	-7.1	-6.2	-14.4	-13.1	-3.7	-5.0	-20.5	-32.3	(7)
Trend (%)	Aug 03	1.4	-0.6	4.6	2.7	1.6	4.7	-2.7	-6.8	(7)
CPI—All groups (%)	Sep qtr 03	0.1	0.6	1.1	0.8	0.9	0.2	-0.1	0.9	(13)
Participation rate trend(e) (%)	Sep 03	-0.1	-0.1	0.0	-0.1	-0.2	0.0	-0.7	0.0	(17)
Unemployment rate trend(e) (%)	Sep 03	-0.1	-0.1	-0.1	0.0	0.1	-0.2	-0.3	0.0	(17)
Average weekly earnings (full-time adults; ordinary time) trend (%)	May qtr 03	1.7	1.5	1.2	2.6	1.5	0.7	1.8	1.9	(20)
Secured housing finance (%)	Aug 03	-5.6	-5.1	-5.5	-8.5	-10.2	-5.1	-4.8	-13.9	(22)
(a) Base year of index 1989–90 = 100.										
(b) The latest quarterly estimate of Australian resident population has been used to calculate ratios for subsequent periods.										
(c) Reference year for chain volume measures is 2001–02.										
(d) Excludes alterations and additions. Includes refinancing.										
(e) Change is shown in terms of percentage points.										

3

STATE ACCOUNTS AT CURRENT PRICES

Period	<u>Final consumption expenditure</u>		<u>Gross fixed capital formation</u>		State final demand	Gross State product	Compensation of employees
	Households	General government	Private	Public			
ANNUAL (\$m)							
2000-01	28 875	9 143	8 522	112	46 654	44 119	20 857
2001-02	30 907	9 709	8 186	1 550	50 350	47 002	21 895
2002-03	33 488	10 197	10 186	1 446	55 314	n.a.	23 139
QUARTERLY, TREND (\$m)							
2001-02							
March	7 805	2 441	2 105	390	12 740	n.a.	5 520
June	7 985	2 470	2 232	375	13 061	n.a.	5 577
2002-03							
September	8 153	2 489	2 329	363	13 334	n.a.	5 639
December	8 304	2 522	2 443	358	13 621	n.a.	5 731
March	8 458	2 567	2 567	359	13 948	n.a.	5 830
June	8 607	2 607	2 675	366	14 299	n.a.	5 293

Source: Australian National Accounts: National Income, Expenditure and Product (cat. no. 5206.0), and Australian National Accounts: State Accounts (cat. no. 5220.0).

4

STATE ACCOUNTS AT CHAIN VOLUME MEASURES(a)

Period	<u>Final consumption expenditure</u>		<u>Gross fixed capital formation</u>		State final demand	Gross State product
	Households	General government	Private	Public		
ANNUAL (\$m)						
1999-00	27 835	9 000	(b)10 516	(b)-2 384	45 859	42 727
2000-01	28 880	9 143	8 522	-732	46 658	44 119
2001-02	30 470	9 352	8 180	521	49 463	45 765
QUARTERLY, TREND (\$m)						
2001-02						
March	7 782	2 434	2 107	388	12 709	n.a.
June	7 909	2 460	2 223	375	12 965	n.a.
2002-03						
September	7 996	2 486	2 308	364	13 154	n.a.
December	8 060	2 508	2 416	360	13 342	n.a.
March	8 146	2 528	2 540	361	13 573	n.a.
June	8 240	2 539	2 654	368	13 812	n.a.

(a) Reference year for chain volume measures is 2001-02.

(b) The negative figure for Public gross fixed capital formation and the larger than usual positive figure for Private gross fixed capital formation are the result of the sale of the South Australian electrical transmission network in December quarter 1999. For more information see *National Income, Expenditure and Product, Australian National Accounts, June 2000* (cat. no. 5206.0).

Source: Australian National Accounts: National Income, Expenditure and Product (cat. no. 5206.0), and Australian National Accounts: State Accounts (cat. no. 5220.0).

5

MERCHANDISE EXPORTS, BY SELECTED COMMODITY GROUP(a)

<i>Period</i>	<i>Meat and meat preparations</i>	<i>Wheat</i>	<i>Wine</i>	<i>Wool and sheepskins (excl. wool tops)</i>	<i>Machinery</i>	<i>Metals and metal manufactures</i>	<i>Fish and crustaceans</i>	<i>Road vehicles, parts and accessories</i>	<i>Petroleum and petroleum products</i>	<i>Total(b)</i>
	\$'000	\$'000	\$'000	\$'000	\$'000	\$'000	\$'000	\$'000	\$'000	\$'000
2000-01	262 565	767 524	1 081 599	236 034	381 785	1 019 926	451 841	1 399 489	355 781	8 286 782
2001-02	316 263	1 154 933	1 358 316	256 722	321 445	913 417	474 854	1 613 919	250 728	9 103 263
2002-03	316 826	776 318	1 455 106	256 644	323 964	866 848	448 723	1 411 450	290 526	8 363 185
2001-02										
February	31 183	86 109	83 914	23 524	25 522	82 009	26 187	122 727	2 328	745 077
March	34 065	119 775	127 140	32 960	35 610	88 158	22 365	170 972	44 358	876 068
April	24 011	102 777	122 653	22 942	32 351	74 900	25 363	134 415	8 900	756 976
May	26 189	114 535	146 020	34 208	33 412	85 067	22 517	84 964	32 896	790 765
June	24 324	91 704	148 574	18 967	27 472	58 902	36 472	183 302	16 920	795 950
2002-03										
July	17 509	25 309	115 141	20 534	27 470	67 414	90 175	110 752	27 041	704 054
August	16 462	87 890	121 771	14 491	24 896	65 047	138 036	134 638	25 870	831 220
September	27 759	60 374	168 513	20 766	31 641	71 967	38 038	82 804	23 846	763 577
October	29 930	50 488	141 821	29 122	24 139	81 376	19 854	115 691	25 432	685 880
November	35 128	65 111	96 826	30 990	26 285	74 824	24 647	276 999	19 613	818 604
December	33 023	54 121	129 290	30 611	28 324	90 891	26 171	207 525	30 625	834 092
January	24 488	58 429	81 523	18 057	17 330	69 594	29 408	31 453	46 499	565 490
February	31 302	122 226	99 032	17 601	27 314	73 028	15 364	127 157	31 903	701 134
March	33 998	94 369	123 624	23 284	35 767	76 507	18 597	100 055	19 494	704 224
April	23 853	19 832	126 128	21 834	29 135	62 833	16 543	59 943	6 233	519 689
May	22 482	99 477	124 883	14 070	26 535	62 361	15 675	92 623	17 926	653 596
June	20 894	38 691	126 554	15 284	25 127	71 004	16 216	71 810	16 042	581 624
2003-04										
July	10 933	49 275	108 390	13 755	25 425	65 107	40 966	87 280	28 694	587 078
August	17 334	32 695	142 320	9 891	29 012	49 879	119 722	88 671	195	630 244

(a) Restrictions are placed on the release of statistics for certain commodities for reasons of confidentiality. These restrictions do not affect total export and import figures, but they can affect some items within commodity, industry and country tables. See *International Trade* (cat. no. 5422.0), Explanatory Notes, paragraph 30, for more details.

(b) Includes other commodity groups not listed.

Source: ABS data available on request.

6

MERCHANDISE EXPORTS, BY SELECTED COUNTRIES AND COUNTRY GROUPS(a)

Period	European Union					South-East and North-East Asia				
	United States of America	Middle East	United Kingdom	Total European Union	New Zealand	Japan	China	Hong Kong	ASEAN(b)	Total
	\$'000	\$'000	\$'000	\$'000	\$'000	\$'000	\$'000	\$'000	\$'000	\$'000
2000-01	1 354 759	1 335 811	713 525	1 232 563	480 887	963 481	437 939	298 939	683 694	2 882 839
2001-02	1 597 719	1 825 194	784 284	1 337 855	568 712	937 578	406 163	240 066	597 414	2 594 269
2002-03	1 402 971	1 329 912	798 393	1 354 459	627 172	931 870	421 959	223 416	683 513	2 675 870
2001-02										
February	96 390	159 853	48 505	93 817	39 929	61 201	20 759	25 147	54 562	191 254
March	151 253	187 747	70 929	134 750	54 261	59 059	63 357	27 514	53 655	245 651
April	131 376	191 395	64 676	96 837	61 889	74 655	33 973	12 231	41 571	196 230
May	129 531	133 050	79 270	116 645	36 358	53 042	37 268	19 133	51 573	205 755
June	179 897	149 770	78 219	124 464	44 543	84 535	27 599	14 205	53 962	208 237
2002-03										
July	74 918	102 167	69 831	116 422	55 005	129 520	24 783	7 936	52 596	270 954
August	149 657	99 934	69 969	115 131	64 639	189 807	29 888	15 393	47 653	311 563
September	95 913	126 778	107 251	170 585	46 478	91 725	35 019	7 956	53 856	236 810
October	124 514	107 491	77 700	115 453	51 528	64 473	34 478	13 004	63 230	217 091
November	240 775	175 617	37 899	74 682	55 019	35 195	53 288	30 257	52 332	210 876
December	165 146	103 930	71 837	122 023	81 860	54 844	39 916	22 573	87 657	262 046
January	61 787	83 362	46 480	83 484	23 593	86 515	39 487	50 976	46 086	253 578
February	103 794	165 742	60 527	106 139	51 631	50 361	47 342	17 404	62 113	197 420
March	118 222	104 982	63 732	130 340	50 848	60 422	25 578	25 291	64 105	197 460
April	85 419	40 123	67 729	116 576	47 729	36 987	46 334	9 696	52 303	171 154
May	87 473	146 536	65 793	106 248	43 049	51 947	20 310	15 526	51 836	162 969
June	95 354	73 250	59 646	97 377	55 792	80 075	25 536	7 405	49 747	183 950
2003-04										
July	96 906	73 661	57 865	101 683	46 716	80 312	31 702	14 463	54 475	205 225
August	80 427	57 992	98 009	135 942	50 174	134 866	13 129	10 079	51 588	226 500

(a) See *International Merchandise Trade, Australia* (cat. no. 5422.0) for country group definitions.

(b) Figures from September 2001 have been updated to include Cambodia in the ASEAN country grouping.

Source: ABS data available on request.

7

MERCHANDISE IMPORTS, BY SELECTED COMMODITY GROUP(a)

<i>Period</i>	<i>Food, beverages and tobacco</i>	<i>Petroleum and petroleum products</i>	<i>Chemicals</i>	<i>Textiles</i>	<i>Metals and metal manufactures</i>	<i>Machinery</i>	<i>Road vehicle parts and accessories</i>	<i>Other manufactured goods</i>	<i>Total(b)</i>
	\$'000	\$'000	\$'000	\$'000	\$'000	\$'000	\$'000	\$'000	\$'000
2000-01	183 196	968 428	284 227	97 281	315 327	1 205 016	854 759	926 817	5 044 553
2001-02	205 295	869 161	266 527	106 543	332 538	1 399 576	887 698	1 058 212	5 346 782
2002-03	248 600	859 621	291 596	101 009	394 043	1 458 434	997 944	1 103 484	5 723 809
2001-02									
February	16 447	127 019	19 898	8 556	24 823	109 118	73 577	91 103	490 816
March	12 504	39 514	35 457	8 338	26 536	94 835	72 474	79 012	389 943
April	11 993	78 266	24 836	9 947	27 980	113 247	81 305	79 415	450 747
May	14 585	62 102	27 331	9 842	27 092	117 219	80 639	86 692	445 885
June	15 103	64 704	14 566	8 448	26 002	96 307	73 499	77 657	393 051
2002-03									
July	17 666	66 712	18 971	7 211	33 106	111 832	88 041	91 501	454 751
August	20 355	63 951	19 172	11 171	35 439	121 990	83 005	97 867	476 144
September	19 907	79 309	20 554	8 920	32 522	123 896	77 186	92 519	474 629
October	27 427	75 644	20 997	11 574	36 988	138 644	102 861	111 149	549 856
November	25 409	99 478	18 138	8 474	32 137	129 215	85 053	98 790	523 005
December	23 239	138 539	18 900	7 312	29 398	161 327	57 850	91 780	549 430
January	20 923	10 582	27 344	7 314	37 903	134 051	81 618	100 239	443 540
February	17 995	143 475	37 879	6 736	29 245	91 475	76 676	92 669	522 180
March	19 157	21	38 516	8 263	31 177	95 171	82 654	86 550	384 994
April	19 564	69 369	26 996	8 053	29 854	114 412	82 397	77 488	450 422
May	18 060	84 235	26 308	8 739	35 544	132 816	92 346	79 073	496 275
June	18 898	28 307	17 823	7 241	30 731	103 603	88 258	83 859	398 583
2003-04									
July	19 982	23 106	18 137	7 797	33 387	130 901	89 600	100 433	445 706
August	19 054	36 705	16 617	6 917	34 320	112 765	81 164	99 380	427 740

(a) Restrictions are placed on the release of statistics for certain commodities for reasons of confidentiality. These restrictions do not affect total export and import figures, but they can affect some items within commodity, industry and country tables. See *International Trade* (cat. no. 5422.0), Explanatory Notes, paragraph 30, for more details.

(b) Includes other commodity groups not listed.

Source: ABS data available on request.

8

TURNOVER OF RETAIL ESTABLISHMENTS, BY INDUSTRY—TREND

Period	Food retailing	Department stores	Clothing and soft good retailing	Household good retailing	Recreational good retailing	Other retailing	Hospitality and services	Total
	\$m	\$m	\$m	\$m	\$m	\$m	\$m	\$m
2001-02								
June	443.1	99.6	54.1	137.6	28.7	119.8	178.3	1 061.5
2002-03								
July	446.6	100.1	54.8	136.1	29.5	120.9	180.4	1 068.0
August	449.3	100.9	55.7	135.0	30.5	121.0	181.9	1 073.6
September	451.3	101.9	56.9	134.5	31.5	120.4	182.3	1 077.9
October	452.3	102.9	58.3	134.5	32.3	119.1	181.9	1 080.6
November	452.9	103.8	59.6	134.9	32.9	117.4	181.3	1 082.6
December	453.7	104.3	60.8	135.3	33.5	116.0	181.2	1 085.0
January	455.3	104.8	61.9	135.1	34.3	115.8	182.1	1 089.4
February	457.8	105.5	62.6	134.6	35.2	117.0	183.6	1 096.4
March	460.4	106.3	62.9	134.3	36.1	118.9	185.1	1 103.8
April	462.3	107.1	62.8	134.5	36.6	120.5	185.8	1 109.4
May	463.2	107.8	62.5	135.0	36.7	121.3	186.0	1 112.4
June	463.2	108.0	62.0	135.5	36.5	121.4	186.0	1 112.6
2003-04								
July	462.4	107.9	61.5	136.0	36.2	120.8	185.8	1 110.8
August	461.0	107.5	61.0	136.3	35.8	120.0	185.9	1 107.7

Source: Retail Trade, Australia (cat. no. 8501.0).

9

NEW MOTOR VEHICLE SALES, BY TYPE OF VEHICLE

Period	Original			Seasonally adjusted			Trend estimate		
	Passenger vehicles	Other vehicles	Total	Passenger vehicles	Other vehicles	Total	Passenger vehicles	Other vehicles	Total
2002-03									
July	3 049	1 408	4 457	2 941	1 419	4 360	2 982	1 437	4 419
August	3 108	1 429	4 537	3 010	1 417	4 427	2 985	1 433	4 418
September	2 936	1 251	4 187	3 121	1 460	4 581	2 984	1 433	4 417
October	3 109	1 390	4 499	2 989	1 445	4 434	3 000	1 444	4 444
November	3 134	1 507	4 641	2 925	1 501	4 426	3 050	1 474	4 524
December	3 062	1 469	4 531	2 862	1 276	4 138	3 136	1 513	4 649
January	2 653	1 335	3 988	3 467	1 769	5 236	3 245	1 548	4 793
February	3 290	1 464	4 754	3 476	1 634	5 110	3 346	1 577	4 923
March	3 562	1 585	5 147	3 440	1 512	4 952	3 415	1 601	5 016
April	3 018	1 489	4 507	3 384	1 660	5 044	3 446	1 621	5 067
May	3 581	1 692	5 273	3 506	1 552	5 058	3 452	1 644	5 096
June	3 869	2 220	6 089	3 365	1 697	5 062	3 465	1 675	5 140
2003-04									
July	3 547	1 751	5 298	3 420	1 758	5 178	3 502	1 718	5 220
August	3 539	1 724	5 263	3 629	1 744	5 373	3 552	1 763	5 315
September	3 601	1 621	5 222	3 696	1 834	5 530	3 605	1 804	5 409

Source: Sales of New Motor Vehicles, Australia (cat. no. 9314.0.55.001).

10

ACTUAL PRIVATE NEW CAPITAL EXPENDITURE, BY SELECTED INDUSTRY AND TYPE OF ASSET

Period	Industry			Total	Type of asset	
	Mining	Manufacturing	Other selected industries		New buildings and structures	Equipment, plant and machinery
ANNUAL (\$m)						
2000-01	434	891	1 537	2 862	692	2 170
2001-02	355	927	1 831	3 113	617	2 496
2002-03	648	1 176	2 189	4 015	778	3 238
QUARTERLY, ORIGINAL (\$m)						
2001-02						
March	78	198	439	714	136	578
June	101	256	539	897	159	738
2002-03						
September	117	237	466	821	159	662
December	173	306	679	1 159	216	943
March	148	287	462	897	163	734
June	210	346	582	1 138	239	899
QUARTERLY, TREND (\$m)						
2001-02						
March	n.a.	n.a.	n.a.	813	161	652
June	n.a.	n.a.	n.a.	864	163	701
2002-03						
September	n.a.	n.a.	n.a.	890	165	725
December	n.a.	n.a.	n.a.	934	180	754
March	n.a.	n.a.	n.a.	1 004	205	799
June	n.a.	n.a.	n.a.	1 088	228	860

Source: Private New Capital Expenditure, Australia (cat. no. 5625.0) and ABS data available on request.

11

TOURIST ACCOMMODATION

Period	Licensed hotels with facilities				Motels and guesthouses				Serviced apartments			
	Estab-lish-ments	Guest rooms	Room occu-pancy	Takings	Estab-lish-ments	Guest rooms	Room occu-pancy	Takings	Estab-lish-ments	Guest rooms	Room occu-pancy	Takings
	no.	no.	%	\$'000	no.	no.	%	\$'000	no.	no.	%	\$'000
2000-01												
March	62	3 905	59.9	25 686	146	5 217	55.2	21 889	27	1 280	67.1	7 955
June	61	4 066	55.9	23 849	146	5 230	50.5	20 289	27	1 300	63.2	7 959
2001-02												
September	61	4 078	56.3	23 498	146	5 231	49.7	19 926	27	1 293	60.1	7 019
December	61	4 083	61.0	26 556	144	5 170	51.9	21 044	27	1 283	67.0	8 218
March	62	4 091	61.6	27 321	145	5 196	55.6	22 468	27	1 293	70.5	8 454
June	62	4 364	55.4	24 362	145	5 234	50.4	20 482	29	1 357	65.6	8 078
2002-03												
September	63	4 381	57.9	26 109	144	5 220	49.4	20 150	30	1 430	65.8	8 595
December	62	4 362	64.8	31 051	145	5 232	55.6	23 424	31	1 435	70.3	10 424
March	64	4 653	56.4	26 778	147	5 316	52.9	22 478	32	4 604	60.3	9 879

Source: Tourist Accommodation, Australia (cat. no. 8635.0).

Period	Houses		Total dwelling units		New residential building \$m	Alterations and additions to residential building \$m	Total residential building \$m	Non-residential building \$m	Total building \$m
	Private sector	Total	Private sector	Total					
	no.	no.	no.	no.					
ANNUAL									
2000-01	5 555	5 644	6 659	6 775	735.6	157.3	892.9	718.2	1 611.1
2001-02	8 858	9 177	10 544	10 903	1 202.3	191.6	1 393.9	804.8	2 198.7
2002-03	8 241	8 602	10 391	10 822	1 382.8	270.0	1 652.7	1 001.5	2 654.2
MONTHLY, ORIGINAL									
2001-02									
May	795	823	953	981	119.3	16.5	135.9	55.5	191.4
June	716	742	798	826	96.2	17.6	113.9	68.3	182.1
2002-03									
July	795	843	877	935	113.7	20.1	133.8	53.3	187.2
August	807	838	1 037	1 072	110.2	22.0	132.2	121.0	253.2
September	762	795	825	860	99.7	20.3	120.0	75.1	195.1
October	729	767	1 083	1 125	198.0	20.5	218.5	56.1	274.6
November	720	760	881	933	117.1	20.1	137.2	162.8	300.0
December	570	614	822	882	111.7	19.5	131.2	64.6	195.8
January	493	514	756	783	103.6	16.7	120.2	42.4	162.7
February	633	651	715	745	96.4	20.3	116.6	65.2	181.8
March	667	678	1 040	1 051	120.8	49.8	170.6	48.4	218.9
April	591	614	683	706	88.8	20.3	109.1	95.6	204.7
May	704	720	805	823	107.8	20.5	128.3	105.4	233.6
June	770	808	867	907	115.1	20.0	135.0	111.5	246.5
2003-04									
July	870	893	979	1 004	138.2	23.3	161.5	86.5	248.0
August	676	705	824	872	113.2	19.4	132.6	89.7	222.3
MONTHLY, TREND									
2001-02									
May	747	774	922	952	105.0	17.3	122.2	59.4	181.6
June	750	779	922	954	102.8	18.1	120.9	61.0	181.8
2002-03									
July	754	786	920	956	101.9	18.9	120.7	68.0	188.7
August	750	786	919	960	103.0	19.6	122.5	78.0	200.5
September	736	775	918	963	106.1	19.9	126.0	86.5	212.5
October	710	749	911	958	110.4	20.0	130.4	91.1	221.5
November	678	714	899	944	114.3	20.1	134.4	90.4	224.8
December	646	678	873	915	115.7	20.3	136.0	85.6	221.6
January	622	649	846	882	114.3	20.7	134.9	80.1	215.0
February	617	639	827	856	111.3	21.1	132.4	77.7	210.1
March	632	651	821	844	108.4	21.5	129.9	79.8	209.7
April	659	679	824	846	106.9	21.5	128.4	85.0	213.4
May	691	713	835	859	107.2	21.3	128.6	91.7	220.3
June	719	744	847	876	109.1	21.1	130.2	95.0	225.2
2003-04									
July	742	770	860	894	111.5	20.8	132.3	94.4	226.7
August	759	789	881	919	115.2	20.5	135.7	91.3	227.1

Source: Building Approvals, Australia (cat. no. 8731.0) and ABS data available on request.

13

BUILDING COMMENCEMENTS

Period	New houses		Total dwelling units(a)		New residential building \$m	Alterations and additions to residential building \$m	Non-residential building		
	Private sector	Total	Private sector	Total			Private sector	Total	Total building
	no.	no.	no.	no.			\$m	\$m	\$m
2000-01	5 303	5 390	6 442	6 556	779.2	161.4	390.4	729.6	1 670.1
2001-02	8 030	8 281	9 702	9 991	1 236.2	197.3	575.0	761.9	2 195.5
2002-03	7 893	8 234	9 890	10 308	1 441.0	253.2	644.6	932.8	2 627.1
2000-01									
June	1 422	1 443	1 605	1 628	196.0	47.9	91.9	300.7	544.6
2001-02									
September	1 835	1 857	2 365	2 400	324.0	45.1	145.3	188.7	557.9
December	2 217	2 273	2 543	2 613	307.8	52.7	167.2	199.4	559.9
March	1 853	1 949	2 232	2 335	280.0	50.5	122.6	173.7	504.1
June	2 125	2 202	2 563	2 644	324.4	49.0	139.9	200.1	573.6
2002-03									
September	2 302	2 403	2 619	2 732	355.6	55.9	177.7	249.0	660.5
December	1 897	2 004	2 636	2 759	402.7	75.0	144.8	268.1	745.8
March	1 821	1 903	2 254	2 366	320.9	57.6	154.9	188.0	566.6
June	1 872	1 924	2 381	2 450	361.8	64.7	167.2	227.7	654.2

(a) Includes conversions.

Source: Building Activity, Australia (cat. no. 8752.0).

VALUE OF BUILDING WORK DONE AND COMPLETED DURING PERIOD

Period	New houses		New residential building			Non-residential building		Total building		
	Private sector	Total	Private sector	Total	Alterations and additions to residential building	Total residential building	Private sector	Total	Private sector	Total
	\$m	\$m	\$m	\$m	\$m	\$m	\$m	\$m	\$m	\$m
VALUE OF BUILDING WORK DONE										
2000-01	679.7	686.9	835.5	845.0	161.9	1 006.9	395.0	624.0	1 385.4	1 630.9
2001-02	852.9	871.7	1 043.3	1 065.3	193.9	1 259.2	522.1	778.2	1 754.6	2 037.4
2002-03	1 051.5	1 088.9	1 275.6	1 318.8	247.4	1 566.2	626.1	890.9	2 146.5	2 457.1
2000-01										
June	161.6	163.8	197.3	200.3	48.2	248.6	97.2	163.9	340.6	412.5
2001-02										
September	184.2	187.2	227.7	231.2	48.7	279.9	112.7	170.6	386.9	450.6
December	219.4	222.6	261.9	265.5	48.4	314.0	146.9	213.8	456.3	527.7
March	215.1	220.0	262.5	268.6	46.9	315.5	131.3	185.0	439.7	500.4
June	234.2	242.0	291.2	300.0	49.8	349.8	131.3	208.9	471.7	558.7
2002-03										
September	259.7	269.0	318.5	328.6	56.4	385.0	163.1	224.6	537.4	609.6
December	255.9	265.3	319.6	330.0	67.7	397.7	151.8	212.0	538.6	609.7
March	260.4	269.4	303.5	314.0	59.1	373.0	143.2	205.0	505.3	578.0
June	275.5	285.2	334.0	346.3	64.2	410.5	168.0	249.4	565.3	659.8
VALUE OF BUILDING WORK COMPLETED										
2000-01	758.7	763.6	942.8	949.0	154.4	1 103.4	436.3	591.5	1 526.5	1 694.9
2000-01	750.8	766.9	884.9	904.3	180.6	1 084.9	430.7	718.7	1 489.7	1 803.5
2002-03	935.8	968.7	1 145.4	1 181.3	227.6	1 408.9	551.6	726.1	1 922.6	2 135.0
2000-01										
June	188.0	188.3	213.7	213.9	52.2	266.1	137.9	164.9	402.4	431.0
2001-02										
September	149.9	153.2	173.1	177.6	55.0	232.6	75.5	121.1	300.5	353.7
December	194.3	197.6	220.5	224.4	38.1	262.5	129.3	259.9	386.3	522.4
March	174.8	177.2	231.9	234.8	39.4	274.2	83.8	127.4	353.7	401.6
June	231.7	238.9	259.4	267.4	48.1	315.6	142.1	210.3	449.2	525.9
2002-03										
September	209.1	219.4	240.1	252.2	45.5	297.7	111.7	164.9	396.6	462.6
December	242.1	247.2	356.7	362.6	62.1	424.7	130.0	161.6	548.5	586.4
March	197.3	204.6	228.6	236.1	55.3	291.4	144.7	194.8	428.2	486.2
June	287.3	297.5	320.1	330.4	64.7	395.1	165.2	204.8	549.4	599.8

Source: Building Activity, Australia (cat. no. 8752.0).

<i>Period</i>	<i>Pigmeat</i> <i>tonnes</i>	<i>Beef</i> <i>tonnes</i>	<i>Mutton</i> <i>tonnes</i>	<i>Lamb</i> <i>tonnes</i>	<i>Sawn timber</i> <i>m³</i>
2000-01	36 679	82 533	36 103	61 893	389 417
2001-02	48 329	85 882	30 342	64 285	434 577
2002-03	64 146	88 363	30 893	60 113	435 984
2000-01					
June	10 524	19 172	8 321	15 451	97 933
2001-02					
September	10 274	18 271	6 290	11 694	103 774
December	9 754	21 325	8 221	17 627	111 797
March	12 583	23 748	8 895	17 232	111 697
June	15 718	22 539	6 936	17 732	107 309
2002-03					
September	15 531	19 663	9 351	11 493	111 724
December	14 865	23 357	10 073	14 864	110 734
March	16 345	23 930	7 521	17 947	107 267
June	17 405	21 413	3 948	15 809	106 259

Source: *Livestock Products, Australia* (cat. no. 7215.0) and ABS data available on request.

<i>Period</i>	<i>Food</i>	<i>Alcohol and tobacco</i>	<i>Clothing and footwear</i>	<i>Housing</i>	<i>House furnishings, supplies and services</i>	<i>Health</i>	<i>Transportation</i>	<i>Communication</i>	<i>Recreation</i>	<i>Education</i>	<i>Miscellaneous</i>	<i>All groups</i>
ANNUAL AVERAGE (1989–90 = 100.0)												
2000–01	136.7	198.3	111.9	104.3	117.1	169.5	138.0	104.7	122.9	225.9	159.3	133.5
2001–02	143.1	207.3	111.1	108.2	120.6	173.0	135.8	105.8	126.9	235.8	165.1	137.2
2002–03	149.3	214.1	112.3	115.2	122.5	183.4	139.6	109.7	131.8	246.1	171.5	142.7
QUARTERLY (1989–90 = 100.0)												
2001–02												
June	143.6	210.0	113.0	109.5	120.9	178.0	138.4	107.3	129.9	240.6	167.0	139.1
2002–03												
September	145.4	210.4	111.5	112.1	121.4	178.1	138.0	109.2	131.5	240.7	171.2	140.3
December	148.1	213.3	112.2	113.0	123.2	178.1	138.8	109.6	131.5	240.7	170.9	141.5
March	151.9	216.0	111.9	117.9	122.5	183.2	144.0	109.9	132.4	251.5	171.6	144.6
June	151.9	216.8	113.5	117.8	122.9	194.0	137.4	110.1	131.7	251.5	172.2	144.3
2003–04												
September	152.8	220.0	111.4	120.2	122.2	193.9	140.7	111.0	130.7	251.8	176.5	145.4
PERCENTAGE CHANGE FROM SAME QUARTER OF PREVIOUS YEAR												
2001–02												
June	3.0	3.3	0.6	4.4	1.3	3.9	-1.4	3.3	6.0	4.2	3.6	3.0
2002–03												
September	3.5	2.2	2.9	5.0	0.7	4.2	1.2	5.4	6.8	4.2	4.7	3.7
December	3.0	3.8	0.0	4.7	1.9	5.2	3.3	3.4	4.7	4.2	4.3	3.6
March	5.0	3.9	1.2	8.6	2.1	5.5	7.5	3.5	2.6	4.5	3.4	5.0
June	5.8	3.2	0.4	7.6	1.7	9.0	-0.7	2.6	1.4	4.5	3.1	3.7
2003–2004												
September	5.1	4.6	-0.1	7.2	0.7	8.9	2.0	1.6	-0.6	4.6	3.1	3.6
PERCENTAGE CHANGE FROM PREVIOUS QUARTER												
2001–02												
June	-0.7	1.1	2.2	0.8	0.8	2.5	3.4	1.0	0.7	0.0	0.6	1.0
2002–03												
September	1.3	0.2	-1.3	2.4	0.4	0.1	-0.3	1.8	1.2	0.0	2.5	0.9
December	1.9	1.4	0.6	0.8	1.5	0.0	0.6	0.4	0.0	0.0	-0.2	0.9
March	2.6	1.3	-0.3	4.3	-0.6	2.9	3.7	0.3	0.7	4.5	0.4	2.2
June	0.0	0.4	1.4	-0.1	0.3	5.9	-4.6	0.2	-0.5	0.0	0.3	-0.2
2002–03												
September	0.6	1.5	-1.9	2.0	-0.6	-0.1	2.4	0.8	-0.8	0.1	2.5	0.8

Source: Consumer Price Index (cat. no. 6401.0).

17

ESTIMATED RESIDENT POPULATION AND COMPONENTS OF POPULATION CHANGE(a)

Period	Net migration			Total increase	Population at end of period
	Natural increase	Interstate	Overseas(b)		
1999-00	6 306	-3 531	3 829	7 219	1 505 038
2000-01	5 495	-2 418	2 765	6 690	1 511 728
2001-02	5 887	-1 854	4 481	8 514	1 520 242
2000-01					
March	1 691	-821	1 276	2 358	1 510 386
June	1 272	-190	46	1 342	1 511 728
2001-02					
September	1 244	-632	1 130	1 742	1 513 470
December	1 264	-171	1 185	2 278	1 515 748
March	1 737	-529	1 665	2 873	1 518 621
June	1 642	-522	501	1 621	1 520 242
2002-03					
September	948	-17	1 283	2 214	1 522 456
December	1 484	-741	937	1 680	1 524 136
March	1 704	-513	2 827	4 018	1 528 154

(a) Differences between the sum of the components and the total of population growth are attributed to intercensal discrepancy.

(b) Includes category jumping. For further information please see *Demography Working Paper 2003/1—Estimated Resident Population and Measurement of Category Jumping*.

Source: Australian Demographic Statistics (cat. no. 3101.0).

18

BIRTHS, DEATHS, MARRIAGES AND DIVORCES(a)

Period	Registrations			
	Births	Deaths	Marriages	Divorces
1999-00	17 896	11 590	8 428	4 197
2000-01	17 414	11 919	7 689	4 072
2001-02	17 481	11 594	7 474	4 448
2000-01				
December	4 274	2 889	2 703	1 031
March	4 402	2 711	2 175	824
June	4 297	3 025	1 719	1 161
2001-02				
September	4 398	3 154	1 096	1 387
December	4 109	2 845	2 444	1 173
March	4 564	2 827	2 135	930
June	4 410	2 768	1 799	958
2002-03				
September	4 355	3 407	1 019	1 062
December	4 327	2 843	2 419	n.y.a.
March	4 265	2 561	n.y.a.	n.y.a.

(a) The quarterly series of Marriage and Divorce numbers has been discontinued. Numbers and rates for both collections are available through the annual ABS publication *Marriages and Divorces* (cat. no. 3310.0).

Source: Australian Demographic Statistics (cat. no. 3101.0).

19

CIVILIAN LABOUR FORCE STATUS(a)

Period	Employed full-time		Employed part-time		Total employed		Unemployed		Labour force	
	Males	Females	Males	Females	Males	Females	Males	Females	Males	Females
ANNUAL AVERAGE ('000)										
2000-01	322.6	156.7	54.8	143.5	377.4	300.2	32.6	20.2	410.0	320.4
2001-02	319.2	153.2	59.2	153.1	378.4	306.3	31.8	20.0	410.2	326.2
2002-03	331.8	159.6	56.8	156.5	388.6	316.1	27.7	19.0	416.4	335.1
MONTHLY, ORIGINAL ('000)										
2002-03										
July	325.3	149.7	56.8	155.6	382.1	305.3	26.0	18.5	408.1	323.8
August	324.8	150.6	54.8	155.7	379.6	306.3	28.8	20.1	408.4	326.4
September	327.8	154.8	63.3	158.8	391.1	313.5	26.9	21.2	418.0	334.7
October	322.4	155.4	62.2	157.5	384.6	312.9	26.2	18.9	410.8	331.8
November	327.1	154.1	57.2	160.1	384.3	314.2	26.7	17.0	410.9	331.2
December	337.6	162.7	56.3	154.4	393.9	317.1	24.3	17.6	418.2	334.6
January	336.0	163.1	51.0	149.4	387.0	312.5	30.5	18.8	417.5	331.4
February	338.4	168.6	50.6	150.0	389.0	318.6	31.5	19.9	420.5	338.5
March	331.8	166.1	59.8	158.4	391.6	324.5	26.7	20.0	418.3	344.4
April	333.2	163.6	58.7	158.6	391.9	322.2	28.8	17.9	420.6	340.0
May	336.7	165.1	56.4	158.2	393.2	323.3	29.1	18.7	422.3	342.0
June	340.8	160.9	54.5	161.8	395.3	322.7	27.3	19.3	422.6	342.0
2003-04										
July	341.1	168.5	57.1	151.6	398.2	320.1	23.5	19.0	421.7	339.1
August	335.4	160.7	60.0	157.4	395.4	318.0	23.8	20.3	419.2	338.3
September	334.6	169.0	60.5	155.0	395.1	324.0	24.7	22.4	419.8	346.4
MONTHLY, TREND ('000)										
2002-03										
July	323.3	150.8	59.5	158.8	382.8	309.6	29.3	19.9	412.1	329.5
August	324.1	151.1	59.6	158.1	383.7	309.2	28.4	20.1	412.1	329.3
September	325.3	152.0	59.6	157.2	384.9	309.2	27.4	20.0	412.3	329.2
October	327.1	153.6	59.0	156.5	386.1	310.1	26.6	19.6	412.7	329.7
November	329.2	156.2	57.8	155.8	387.0	312.0	26.3	19.1	413.4	331.1
December	331.2	159.4	56.6	155.1	387.8	314.5	26.5	18.5	414.3	333.1
January	333.0	162.4	55.5	155.0	388.5	317.4	27.1	18.2	415.6	335.6
February	334.7	165.0	54.8	155.2	389.5	320.2	27.8	18.0	417.3	338.2
March	336.4	166.7	54.6	155.7	391.0	322.4	28.4	18.1	419.4	340.5
April	337.5	167.1	55.2	156.5	392.7	323.6	28.5	18.5	421.2	342.0
May	338.2	166.7	56.0	156.9	394.2	323.6	28.1	18.9	422.4	342.5
June	338.5	165.9	57.0	157.0	395.5	322.9	27.3	19.4	422.8	342.4
2003-04										
July	338.3	165.3	58.0	156.8	396.3	322.1	26.5	20.0	422.7	342.1
August	337.7	164.8	59.0	156.4	396.7	321.2	25.6	20.6	422.3	341.8
September	337.0	164.4	59.7	155.9	396.7	320.3	24.9	21.1	421.6	341.4

(a) Population aged 15 years and over.

Source: Labour Force, Australia (cat. no. 6202.0).

Period	Civilian population			Unemployment rate			Participation rate		
	Males aged 15 and over	Females aged 15 and over	Persons aged 15-19	Males all ages	Females all ages	Persons all ages	Males	Females	Persons
	'000	'000	%	%	%	%	%	%	%
ANNUAL AVERAGE									
2000-01	591.6	616.9	17.9	8.0	6.3	7.2	69.3	51.9	60.4
2001-02	595.4	620.5	18.5	7.8	6.1	7.1	68.9	52.6	60.6
2002-03	600.7	625.5	16.8	6.7	5.7	6.2	69.3	53.6	61.3
MONTHLY, ORIGINAL									
2002-03									
July	597.9	623.0	13.0	6.4	5.7	6.1	68.3	52.0	59.9
August	598.4	623.5	16.3	7.0	6.2	6.7	68.2	52.4	60.1
September	598.9	624.0	16.6	6.4	6.3	6.4	69.8	53.6	61.5
October	599.3	624.4	16.3	6.4	5.7	6.1	68.5	53.1	60.7
November	599.8	624.8	14.9	6.5	5.1	5.9	68.5	53.0	60.6
December	600.2	625.2	15.5	5.8	5.3	5.6	69.7	53.5	61.4
January	600.9	625.8	19.7	7.3	5.7	6.6	69.5	53.0	61.0
February	601.6	626.3	18.3	7.5	5.9	6.8	69.9	54.0	61.8
March	602.3	626.9	15.9	6.4	5.8	6.1	69.4	54.9	62.0
April	602.7	627.1	18.0	6.8	5.3	6.1	69.8	54.2	61.9
May	603.0	627.4	20.1	6.9	5.5	6.3	70.0	54.5	62.1
June	603.4	627.6	17.4	6.5	5.6	6.1	70.0	54.5	62.1
2003-04									
July	603.8	628.1	15.5	5.6	5.6	5.6	69.8	54.0	61.8
August	604.3	628.4	18.4	5.7	6.0	5.8	69.4	53.8	61.5
September	604.7	628.9	20.1	5.9	6.5	6.1	69.4	55.1	62.1
MONTHLY, TREND									
2002-03									
July	n.a.	n.a.	n.a.	7.1	6.0	6.6	68.9	52.9	60.7
August	n.a.	n.a.	n.a.	6.9	6.1	6.5	68.9	52.8	60.7
September	n.a.	n.a.	n.a.	6.6	6.1	6.4	68.8	52.8	60.6
October	n.a.	n.a.	n.a.	6.5	5.9	6.2	68.9	52.8	60.7
November	n.a.	n.a.	n.a.	6.4	5.8	6.1	68.9	53.0	60.8
December	n.a.	n.a.	n.a.	6.4	5.6	6.0	69.0	53.3	61.0
January	n.a.	n.a.	n.a.	6.5	5.4	6.0	69.2	53.6	61.2
February	n.a.	n.a.	n.a.	6.7	5.3	6.1	69.4	54.0	61.5
March	n.a.	n.a.	n.a.	6.8	5.3	6.1	69.6	54.3	61.8
April	n.a.	n.a.	n.a.	6.8	5.4	6.2	69.9	54.5	62.1
May	n.a.	n.a.	n.a.	6.7	5.5	6.1	70.0	54.6	62.2
June	n.a.	n.a.	n.a.	6.5	5.7	6.1	70.1	54.5	62.1
2003-04									
July	n.a.	n.a.	n.a.	6.3	5.8	6.1	70.0	54.5	62.1
August	n.a.	n.a.	n.a.	6.1	6.0	6.0	69.9	54.4	62.0
September	n.a.	n.a.	n.a.	5.9	6.2	6.0	69.7	54.3	61.9

(a) Population aged 15 years and over.

Source: Labour Force, Australia (cat. no. 6202.0).

21

AVERAGE WEEKLY EARNINGS OF EMPLOYEES

Period	Males			Females			Persons		
	Full-time adult ordinary time earnings	Full-time adult total earnings	All males total earnings	Full-time adult ordinary time earnings	Full-time adult total earnings	All females total earnings	Full-time adult ordinary time earnings	Full-time adult total earnings	All employees total earnings
ANNUAL AVERAGE (\$ per week)									
2000-01	811.30	864.40	746.80	685.20	703.90	491.20	765.70	806.40	619.70
2001-02	830.20	890.18	775.00	731.10	744.33	505.18	797.18	841.68	643.75
2002-03	864.85	914.08	790.10	772.03	785.75	530.28	833.75	871.05	667.48
QUARTERLY, ORIGINAL (\$ per week)									
2001-02									
February	831.00	900.50	773.20	741.80	754.60	497.90	801.50	852.20	639.20
May	829.40	899.40	783.50	735.10	749.80	503.80	799.40	851.80	649.90
2002-03									
August	829.90	877.40	765.50	757.20	770.30	543.20	805.50	841.40	661.80
November	851.10	902.10	781.00	755.80	769.30	527.20	818.90	857.20	662.40
February	884.60	933.00	810.50	781.60	795.60	550.70	850.90	888.00	692.30
May	893.80	943.80	803.40	793.50	807.80	500.00	859.70	897.60	653.40
QUARTERLY, TREND (\$ per week)									
2001-02									
February	828.80	893.10	774.90	737.70	751.10	505.10	799.00	846.70	643.80
May	828.50	892.40	774.10	744.30	757.90	513.50	801.00	848.30	649.10
2002-03									
August	835.80	892.80	776.80	750.50	763.90	527.90	807.50	850.20	660.70
November	853.40	903.70	784.90	761.80	775.50	535.10	822.80	861.20	669.40
February	876.10	923.30	797.10	777.30	791.60	532.50	843.10	879.20	672.60
May	898.70	944.80	810.20	794.70	809.80	523.80	864.60	899.60	671.30

Source: Average Weekly Earnings, States and Australia (cat. no. 6302.0).

22

SECURED HOUSING FINANCE COMMITMENTS(a)

Period	Original		Seasonally adjusted		Trend	
	Dwelling units	Value	Dwelling units	Value	Dwelling units	Value
	no.	\$m	no.	\$m	no.	\$m
2001-02						
June	4 681	498	4 671	511	4 504	494
2002-03						
July	4 988	524	4 711	502	4 500	501
August	4 166	476	4 367	508	4 427	504
September	3 825	454	4 171	493	4 307	503
October	4 329	517	4 261	517	4 193	500
November	4 336	529	4 038	494	4 133	499
December	4 322	539	4 128	496	4 159	506
January	3 765	465	4 233	517	4 259	522
February	4 112	508	4 321	522	4 405	546
March	4 814	617	4 728	600	4 560	574
April	4 583	580	4 634	593	4 694	602
May	5 089	671	4 903	650	4 788	625
June	4 975	649	4 876	647	4 850	642
2003-04						
July	5 115	661	4 863	638	4 888	655
August	4 495	604	4 812	660	4 904	663

(a) Excludes alterations and additions. Includes refinancing.

Source: Housing Finance for Owner Occupation, Australia (cat. no. 5609.0).

23

FINANCE COMMITMENTS

Period	Commercial finance commitments			Personal finance commitments			Total lease finance commitments
	Fixed loan facilities	Revolving credit facilities	Total commercial finance commitments	Fixed loan facilities	Revolving credit facilities	Total personal finance commitments	
	\$m	\$m	\$m	\$m	\$m	\$m	
2001-02							
June	595.1	370.9	966.0	188.7	187.9	376.6	17.3
2002-03							
July	593.0	413.3	1 006.3	198.3	180.2	378.5	15.2
August	524.6	484.1	1 008.7	195.7	180.2	375.9	12.3
September	524.0	433.9	957.9	180.2	150.1	330.4	13.4
October	545.4	372.3	917.7	190.4	182.3	372.8	14.2
November	519.2	341.6	860.8	199.1	190.1	389.2	12.8
December	706.9	373.0	108.9	210.0	204.9	414.9	14.2
January	616.6	272.2	888.9	210.5	147.3	357.8	15.3
February	469.0	244.5	713.5	210.0	155.4	365.4	13.6
March	589.7	289.8	879.5	218.9	204.8	423.6	17.3
April	602.5	208.2	810.7	212.2	186.4	398.6	13.1
May	571.8	269.8	841.6	234.1	205.9	440.0	15.5
June	788.5	316.2	1 104.7	239.1	210.9	450.0	18.6
2003-04							
July	651.5	452.7	1 104.2	234.9	222.6	457.5	16.6
August	613.4	314.8	928.2	238.2	224.4	462.5	13.1

Source: ABS data available on request.

SOURCES FOR SUMMARY TABLES (TABLES 1 AND 2)

- (1) *Australian National Accounts: National Income, Expenditure and Product*, cat. no. 5206.0—and ABS data available on request
- (2) International Merchandise Trade, ABS data available on request
- (3) *Retail Trade, Australia*, cat. no. 8501.0, Monthly
- (4) *Sales of New Motor Vehicles, Australia*, cat. no. 9314.0.55.001 Monthly
- (5) *Private New Capital Expenditure, Australia*, cat. no. 5625.0, Quarterly—and Ausstats data
- (6) *Tourist Accommodation, Australia*, cat. no. 8635.0, Quarterly
- (7) *Building Approvals, Australia*, cat. no. 8731.0, Monthly
- (8) *Building Activity, Australia*, cat. no. 8752.0, Quarterly
- (9) *Engineering Construction Activity, Australia*, cat. no. 8762.0, Quarterly
- (10) *Manufacturing Production, Australia, Preliminary*, cat. no. 8301.0, Quarterly
- (11) *Livestock Products, Australia*, cat. no. 7215.0, Quarterly—and ABS data available on request
- (12) *Actual and Expected Private Mineral Exploration, Australia*, cat. no. 8412.0, Quarterly
- (13) *Consumer Price Index*, cat. no. 6401.0, Quarterly
- (14) *Producer Price Indexes, Australia*, cat. no. 6427.0, Quarterly
- (15) *House Price Indexes: Eight Capital Cities*, cat. no. 6416.0, Quarterly
- (16) *Australian Demographic Statistics*, cat. no. 3101.0, Quarterly
- (17) *Labour Force, Australia, Preliminary*, cat. no. 6202.0, Monthly
- (18) *Job Vacancies, Australia*, cat. no. 6354.0, Quarterly
- (19) *Industrial Disputes, Australia*, cat. no. 6321.0, Monthly
- (20) *Average Weekly Earnings, States and Australia*, cat. no. 6302.0, Quarterly
- (21) *Wage Cost Index, Australia*, cat. no. 6345.0, Quarterly
- (22) *Housing Finance for Owner Occupation, Australia*, cat. no. 5609.0, Monthly
- (23) *Lending Finance, Australia*, cat. no. 5671.0, Monthly—and ABS data available on request
- (24) *Reserve Bank of Australia Bulletin*

FOR MORE INFORMATION...

- INTERNET* **www.abs.gov.au** the ABS web site is the best place to start for access to summary data from our latest publications, information about the ABS, advice about upcoming releases, our catalogue, and Australia Now—a statistical profile.
- LIBRARY* A range of ABS publications is available from public and tertiary libraries Australia-wide. Contact your nearest library to determine whether it has the ABS statistics you require, or visit our web site for a list of libraries.
- CPI INFOLINE* For current and historical Consumer Price Index data, call 1902 981 074 (call cost 77c per minute).
- DIAL-A-STATISTIC* For the latest figures for National Accounts, Balance of Payments, Labour Force, Average Weekly Earnings, Estimated Resident Population and the Consumer Price Index call 1900 986 400 (call cost 77c per minute).

INFORMATION SERVICE

Data which have been published and can be provided within five minutes are free of charge. Our information consultants can also help you to access the full range of ABS information—ABS user-pays services can be tailored to your needs, time frame and budget. Publications may be purchased. Specialists are on hand to help you with analytical or methodological advice.

- PHONE* **1300 135 070**
- EMAIL* **client.services@abs.gov.au**
- FAX* 1300 135 211
- POST* Client Services, ABS, GPO Box 796, Sydney 2001

WHY NOT SUBSCRIBE?

ABS subscription services provide regular, convenient and prompt deliveries of ABS publications and products as they are released. Email delivery of monthly and quarterly publications is available.

- PHONE* 1300 366 323
- EMAIL* subscriptions@abs.gov.au
- FAX* 03 9615 7848
- POST* Subscription Services, ABS, GPO Box 2796Y, Melbourne 3001



2130740011030
ISSN 1039-8880

RRP \$21.00